

COMPRESSED AIR FILTER

PF20G (G^{1/4}, G^{3/8}, G^{1/2})

FEATURES

PNEUMSYS Series Intermediate range general purpose
Filter removes upto 99% of the liquid water.

Design of the filter element gives both surface and
depth filtration for cleaner air.

Choice of elements, bowls drains to suit all applications.



PARAMETERS	SPECIFICATIONS	
Pipe Threads	G 1/4, 3/8, 1/2 Parallel (F)	- Standard
	BSPTTr. / NPT	- Optional
Filter Element Size	5, 25, 40 micron	
Element Material	Plastic (Polypropylene)	- Standard
	Sintered Bronze	- Optional
Body Material	Al. Alloy die cast	
Bowl Material	Transparent Polycarbonate with bowl guard	- Standard
	Al. Alloy Metal with sight glass	- Optional
Maximum inlet Pressure	with PC Bowl(Manual/ Auto/Semi-auto) : 150 psig (10.5 bar) with Metal Bowl (Manual drain) : 250 psig (17.5 bar) with Metal Bowl (Auto / Semi-auto) : 150 psig (10.5 bar)	
Maximum Operating Temperature (ambient)	with PC Bowl	: 50° C (125° F)
	with Metal Bowl	: 80° C (175° F)
Standard Nominal Flow Rate At 6 bar (87 PSI) supply pressure and 1 bar (14.5 PSI) Pressure drop	G 1/4	: 84 scfm (40 dm ³ /sec) CV(1.58)
	G 3/8	: 170 scfm (81 dm ³ /sec) CV(3.21)
	G 1/2	: 283 scfm (135 dm ³ /sec) CV(5.33)
Drain	Manual	- Standard
	Automatic	- Optional
	Semi Automatic	- Optional

+ Values indicated are with 40 micron elements, with finer elements these values will be lower.

COMPRESSED AIR FILTER

PF20G (G^{1/4}, G^{3/8}, G^{1/2})

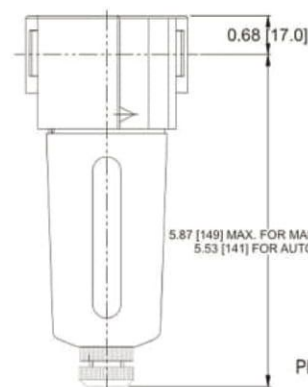
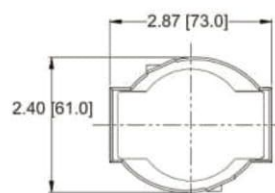
Size	Flow (dm ³ /s)	Element (um)	Drain	Bowl	Model
G 1/4	84 scfm (40 dm ³ /sec)	25	Auto	Transparent	SF20G-2G-A2PN
			Manual	Transparent	SF20G-2G-M2PN
G 3/8	170 scfm (81 dm ³ /sec)	25	Auto	Transparent	SF20G-3G-A2PN
			Manual	Transparent	SF20G-3G-M2PN
G 1/2	283 scfm (135 dm ³ /sec)	25	Auto	Transparent	SF20G-4G-A2PN
			Manual	Transparent	SF20G-4G-M2PN

Option Selector

Sample Model Number → **P F 2 0 G - 2 A - M 2 P N** □ □

Position → **0 1 2 3 4 - 5 6 - 7 8 9 10 11 12**

- 0** Position: **P** = Pneumsys
- 1** Product: **F** = Filter
- 2 3** Series: **20** = 3/8 Basic
- 4** Type: **G** = General Purpose
- 5** Size:
 - 2** = 1/4"
 - 3** = 3/8"
 - 4** = 1/2"
- 6** Port Thread:
 - A** = NPT
 - B** = ISO Rc Taper (=BSPT)
 - G** = ISO 'Parallel' (=BSP)
- 7** Drain:
 - M** = Manual
 - A** = Automatic (only available with Nitrile elastomers)
 - S** = Semi Automatic (only available with Nitrile elastomers)
- 8** Filter Element:
 - 1** = 05 M Porous Plastic
 - 2** = 25 M Porous Plastic
 - 3** = 40 M Porous Plastic
 - 6** = 05 M Sintered Bronze
 - 7** = 25 M Sintered Bronze
 - 8** = 40 M Sintered Bronze
 - X** = No Filter element (for water separator)
- 9** Bowl:
 - P** = P. C. Bowl with Guard
 - D** = Metal Bowl with Sight Glass
 - [M]** = Metal Bowl without sight glass
- 10** Mounting & Accessories:
 - N** = No Mounting Bracket,
 - B** = Wall Mounting Bracket,
- 11** Spl.option:
 - Blank** = Standard Unit
 - [L]** = with 1" longer filter element (for SF20G only)
- 12** Elastomer:
 - Blank** = Std. unit with Nitrile elastomer
 - [E]** = EPDM
 - [V]** = Viton
 - [L]** = Low Temperature Nitrile
- 13** Test / Approval:
 - Blank** = Standard units
 - C** = CE
 - E** = EAC
 - S** = SIL3
 - G** = CE, EAC
 - H** = CE, SIL3
 - J** = EAC, SIL3
 - K** = CE, EAC, SIL3
 - O** = Other customer reqmt. if any.



PF20G (G^{1/4}, G^{3/8}, G^{1/2})

VAPOUR REMOVAL FILTER

PF20V (G¹/₄, G³/₈, G¹/₂)

FEATURES

PNEUMSYS Series removal filters are Ultra high efficiency-compact size- low flow units.

Activated carbon pack acts as an absorbent to assist in the removal of hydro carbon gases and also absorbs any oil carry over in the event of any malfunction.

The element changes colour in the presence of oil to indicate that filter requires attention.



PARAMETERS	SPECIFICATIONS
Pipe Threads	G 1/4, 3/8, 1/2 - Standard BSPT, NPT - Optional
Element Material	Activated carbon
Body Material	Al. Alloy die-cast
Bowl Material	Polycarbonate - Standard Al. Alloy metal without sight glass - Optional
Max. Inlet Pressure	with P.C. Bowl - 150 psig (10.5 bar) with Metal Bowl - 250 psig (17.5 bar)
Operating Temperature Range (ambient)	with P.C. Bowl : -6°C to 50°C (20°F to 120°F) with Metal Bowl : -6°C to 80°C (20°F to 175°F)
Recommended flow at an inlet pressure of 100 psi (6.8 bar)	15 scfm (7 dm ³ /sec) CV(0.28)
Particle Removal	upto 0.01 micron
Maximum Oil Removal content	upto 0.003 ppm
Note : Recommended	Use Pre-Filter with 5 micron element

VAPOUR REMOVAL FILTER

PF20V (G 1/4, G 3/8, G 1/2)

Size	Flow (dm ³ /s)	Bowl	Model
G 1/4	15 scfm (7 dm ³ /sec)	Polycarbonate	SF20V-2G-EOTN
G 3/8	15 scfm (7 dm ³ /sec)	Polycarbonate	SF20V-3G-EOTN

Option Selector

